

CORPORATE FASHION




seidensticker

EXPLORE NOW

We would like to invite you to our B2B Webshop. Make use of the advantages of our trade portal:

- Easy ordering process directly via internet – around the clock
- Up to date information about the availability of all webshop articles
- Visualisation of articles

We are looking forward to welcoming you to our B2B Webshop for dealers. Start your Seidensticker online purchase now.

Any questions? Please contact us:
corporate-fashion@seidensticker.de

Wir laden Sie herzlich in unseren B2B Webshop ein. Nutzen Sie die Vorteile unseres Händlerportals:

- Einfache Bestellung direkt im Internet – rund um die Uhr
- Aktuelle Informationen zur Verfügbarkeit der Webshop Artikel
- Visualisierung der Artikel

Wir würden uns freuen, Sie in unserem B2B Webshop für Händler begrüßen zu dürfen. Starten Sie direkt mit dem Online-Einkauf bei Seidensticker.

Sie haben Fragen? Bitte kontaktieren Sie uns:
corporate-fashion@seidensticker.de

www.quintet24.com

Sales Germany

Fon: +49 (0) 521 306 - 472
Fax: +49 (0) 521 306 - 755
corporate-fashion@seidensticker.de

Sales International

Fon: +49 (0) 521 306 - 590
Fax: +49 (0) 521 306 - 755
corporate-fashion@seidensticker.de

PASSION SINCE 1919



Seidensticker Headquarter
Bielefeld, Germany

Innovative power combined with modern traditional insight forms the SEIDENSTICKER philosophy. Since its foundation in 1919, the interaction of inherited specialisation and lived innovative culture has always been the impulse for the owner-operated company.

Innovationsdrang in Verbindung mit modernem Traditionsverständnis bildet die Grundlage der SEIDENSTICKER-Philosophie. Das Zusammenspiel aus vererbtem Spezialistentum und gelebter Innovationskultur ist der Antrieb des inhabergeführten Unternehmens seit seiner Gründung im Jahre 1919.

SEIDENSTICKER GROUP

- 100 percent family-owned
 - 2,300 employees worldwide
 - 15 company facilities
 - 4 company production sites in Asia
 - 10 million produced shirts and blouses per year
-
- 100 Prozent in Familienbesitz
 - 2.300 Mitarbeiter weltweit
 - 15 Unternehmensstandorte
 - 4 unternehmenseigene Produktionsstandorte in Asien
 - 10 Millionen produzierte Produkte im Jahr



Seidensticker Headquarter
Bielefeld, Germany

CORPORATE RESPONSIBILITY

„RESPONSIBILITY EXTENDS TO THAT POINT,
WHERE AN EFFECT CAN BE ACHIEVED.“

As a family business, we have set our objective in reconciling social, ecological and economical responsibility. On the basis of our policy statement, we have clearly strengthened our corporate responsibility commitment during the last few years and established a holistic sustainability strategy, with eight elements of transparent objectives, defined along our value chain, along with an on-product labelling “together responsible” for the first time.

A giant step – but for us it is only the beginning.

„VERANTWORTUNG ERSTRECKT SICH DA,
WO WIRKUNG ERZIELT WERDEN KANN.“

Als Familienunternehmen verfolgen wir das Ziel, soziale, ökologische und ökonomische Verantwortung miteinander in Einklang zu bringen.

Auf Basis unserer Grundsatzerklärung haben wir unser Corporate Responsibility Engagement in den letzten Jahren deutlich verstärkt und für die Marke Seidensticker eine ganzheitliche Nachhaltigkeitsstrategie etabliert, die in acht Elementen transparente Zielsetzungen entlang unserer Wertschöpfungskette definiert sowie erstmalig eine On-Product-Kennzeichnung „together responsible“ beinhaltet.

Ein großer Schritt – für uns aber erst der Anfang.



LET'S GET BETTER TOGETHER

Fair and environmentally-friendly produced products are indicated with the on-product labelling “together responsible”.



Sustainable Raw
Materials Supply

Nachhaltiger
Rohstoffanbau



Ethical
Manufacturing

Sozialverträgliche
Produktion



Environmental-friendly
Fabric Production

Umweltfreundliche
Geweberstellung



Climate Neutral
Packaging & Shipping






Klimaneutrale
Verpackung & Versand



Learn more:



FIT GUIDE MENSWEAR

X-SLIM		Waist 94 cm for size 40 Two back darts for slimmer waist 100% cotton Non-iron finishing Size: 14 - 17½ inch	Taillenweite 94 cm bei Größe 40 Zwei Rückenabnäher für die schmale Taillenweite 100% Baumwolle Non-iron Ausrüstung Größe: 36 - 44
SLIM		Waist 98 cm for size 40 Two back darts for slimmer waist 100% cotton Non-iron finishing Size: 14 - 17¾ inch	Taillenweite 98 cm bei Größe 40 Zwei Rückenabnäher für die schmale Taillenweite 100% Baumwolle Non-iron Ausrüstung Größe: 36 - 45
SHAPED		Waist 102 cm for size 40 Two back darts for slightly slimmer waist 100% cotton Non-iron finishing Size: 14½ - 18 inch	Taillenweite 102 cm bei Größe 40 Zwei Rückenabnäher für die taillierte Passform 100% Baumwolle Non-iron Ausrüstung Größe: 37 - 46
REGULAR		Waist 108 cm for size 40 Two side pleats for better ease of movement 100% cotton Non-iron finishing Size: 15 - 19 inch	Taillenweite 108 cm bei Größe 40 Zwei Seitenfalten für bessere Bewegungsfreiheit 100% Baumwolle Non-iron Ausrüstung Größe: 38 - 48
COMFORT		Waist 114 cm for size 40 Two side pleats for better ease of movement 100% cotton Non-iron finishing Size: 15½ - 21½ inch	Taillenweite 114 cm bei Größe 40 Zwei Seitenfalten für bessere Bewegungsfreiheit 100% Baumwolle Non-iron Ausrüstung Größe: 39 - 54

FIT GUIDE WOMENSWEAR

SLIM FIT	<p>Including our slim fit styles as essential basics in your product range, you are able to provide availability across all seasons. The slim fit with a perfect waist offers highest wearing comfort whether made of 100% cotton or with some stretch.</p> <p>Mit unseren Slim Fit Modellen nehmen Sie unverzichtbare Basics in Ihr Sortiment auf, die Sie saisonübergreifend anbieten können. Die schmale Passform mit einer perfekt modellierten Taillierung bietet höchsten Tragekomfort – ob aus 100% Baumwolle oder mit Stretch-Anteil.</p>
REGULAR FIT	<p>With the regular fit blouses we offer you a great colour range in the approved high-quality, non-iron cotton qualities. These styles for every type of figure are available from stock all year round.</p> <p>Bei den Regular Fit Blusen bieten wir Ihnen eine große Farbvarianz in den bewährten hochwertigen, bügelfreien Baumwollqualitäten. Diese Modelle für jeden Figurtyp sind ab Lager ganzjährig abrufbar.</p>

COLLAR STYLES



Business Kent



Spread Kent

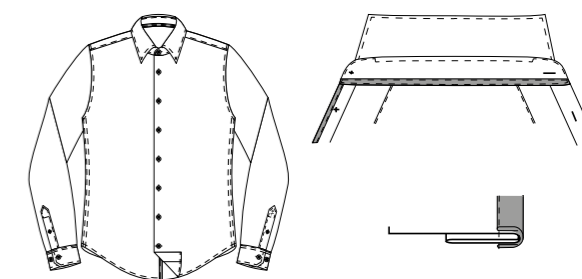


Button Down

DETAILS

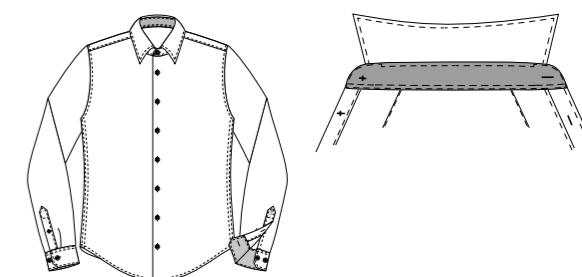
Patch 3

Small stripe of contrast fabric at inner collar band and below button panel
Besatz als schmaler Streifen am unteren Innensteg sowie ein schmaler Besatzstreifen an der unteren Knopfleiste



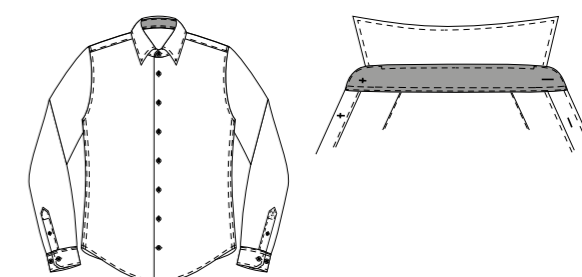
Patch 5

Contrast fabric at inner collar band and inner cuff
Besatz am Innensteg und in der Manschette



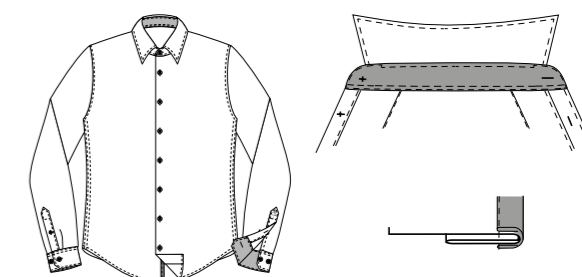
Patch 12

Contrast fabric at inner collar band
Besatz am Innensteg



Patch 13

Contrast fabric at inner collar band and inner cuff
such as a small stripe of contrast fabric at below button panel
Besatz am Innensteg und in der Manschette sowie ein schmaler Besatzstreifen an der unteren Knopfleiste



POPLIN



White 474980.01
Black 477870.39

X-SLIM

Business Kent 1/1
Sizes: 36 - 44
Waist: 94 cm for size 40



White 675198.01
Dark navy 675198.19
Black 675198.39

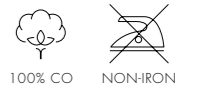
SLIM

Business Kent 1/1
Sizes: 36 - 45
Waist: 98 cm for size 40

EXTRA LONGSLEEVE AVAILABLE IN WHITE AND BLACK.

Slim: 675665.01/ 675665.39

POPLIN

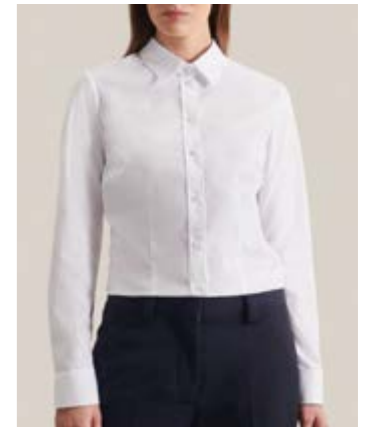


SLIM

Kent 1/1
Sizes: 32 - 48



White 080635.01
Black 080635.39

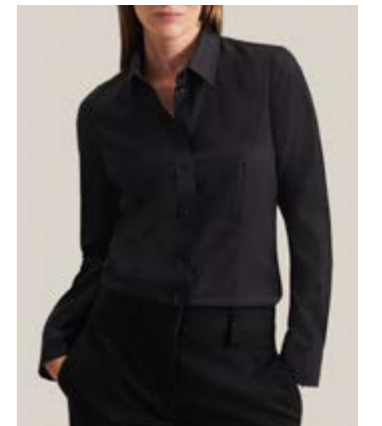


REGULAR

Kent 1/1
Sizes: 34 - 54



White 080604.01
Dark navy 080604.18
Black 080604.39

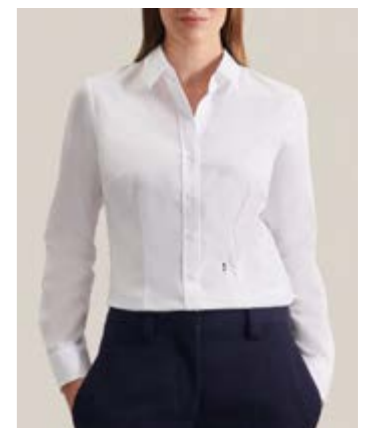


SLIM

Kent 1/1
Sizes: 32 - 48



White 080613.01
Dark navy 080613.18
Black 080613.39



POPLIN

100% CO NON-IRON



White 021000.01
Dark navy 021000.19
Black 021000.84

SHAPED

Business Kent 1/1
Sizes: 37 - 46
Waist: 102 cm for size 40



White 003000.01 *
Dark navy 001000.19
Black 001000.84 *

REGULAR

Business Kent 1/1
with breast pocket
Sizes: 38 - 45
Waist: 108 cm for size 40



White 312420.01

COMFORT

Business Kent 1/1
with breast pocket
Sizes: 39 - 54
Waist: 114 cm for size 40

EXTRA LONGSLEEVE AVAILABLE IN WHITE AND BLACK.

Shaped: 021005.01/ 021005.39 Regular: 003005.01/ 003005.39

* Size 38 - 54



POPLIN



White 676521.01
 Dark navy 676521.19
 Black 676521.39

SLIM
 Business Kent 1/2
 Sizes: 36 - 45
 Waist: 98 cm for size 40



White 021001.01
 Dark navy 021001.19
 Black 021001.84

SHAPED
 Business Kent 1/2
 Sizes: 37 - 46
 Waist: 102 cm for size 40

POPLIN



SLIM
 Kent 1/2
 Sizes: 32 - 48



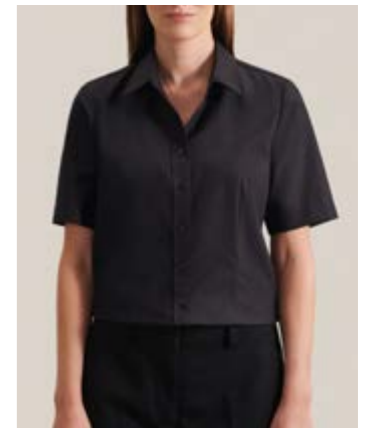
White 080636.01



REGULAR
 Kent 1/2
 Sizes: 34 - 54



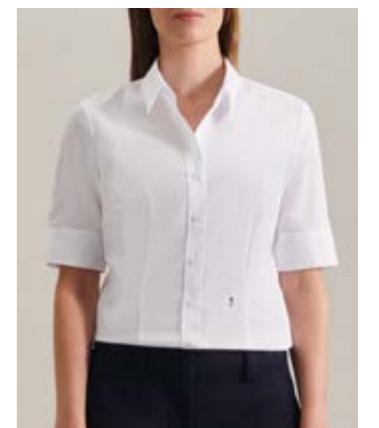
White 080605.01
 Black 080605.39



SLIM
 Kent 1/2
 Sizes: 32 - 48



White 080614.01
 Black 080614.39



POPLIN



White 003001.01 *
Dark navy 001001.19
Black 001001.84

REGULAR

Business Kent 1/2
with breast pocket
Sizes: 38 - 45
Waist: 108 cm for size 40



White 312421.01

COMFORT

Business Kent 1/2
with breast pocket
Sizes: 39 - 54
Waist: 114 cm for size 40



* Size 38 -54

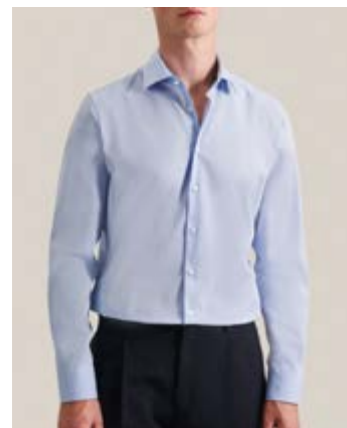
FIL À FIL



Light blue 474980.12

X-SLIM

Business Kent 1/1
 Sizes: 36 - 44
 Waist: 94 cm for size 40



Light blue 666260.10

Mid blue 666260.11

Anthra 666260.37

SLIM

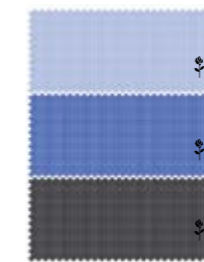
Business Kent 1/1
 Sizes: 36 - 45
 Waist: 98 cm for size 40

FIL À FIL



SLIM

Kent 1/1
 Sizes: 32 - 48



Light blue 080613.12

Mid blue 080613.14

Anthra 080613.33



REGULAR

Kent 1/1
 Sizes: 34 - 54



Light blue 080604.12

Mid blue 080604.14

Anthra 080604.33



EXTRA LONGSLEEVE AVAILABLE IN LIGHT BLUE AND ANTHRA.

Slim: 675665.10/ 675665.37

FIL À FIL



Light blue	241600.10
Mid blue	241600.14
Anthra	241600.34

SHAPED

Business Kent 1/1
 Sizes: 37 - 46
 Waist: 102 cm for size 40



Light blue	003000.48 *
Mid blue	003000.14 *
Anthra	003000.67 *

REGULAR

Business Kent 1/1
 with breast pocket
 Sizes: 38 - 45
 Waist: 108 cm for size 40



EXTRA LONGSLEEVE AVAILABLE IN LIGHT BLUE AND ANTHRA.

Shaped: 021005.10/ 021005.37 Regular: 003005.10/ 003005.37

* Size 38 - 54

FIL À FIL



Light blue 666261.10
Mid blue 666261.11
Anthra 666261.37

SLIM

Business Kent 1/2
Sizes: 36 - 45
Waist: 98 cm for size 40



Light blue 241601.10
Mid blue 241601.14
Anthra 241601.34

SHAPED

Business Kent 1/2
Sizes: 37 - 46
Waist: 102 cm for size 40



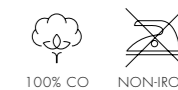
Light blue 003001.48
Mid blue 003001.14 *
Anthra 003001.67

REGULAR

Business Kent 1/2
with breast pocket
Sizes: 38 - 48
Waist: 108 cm for size 40

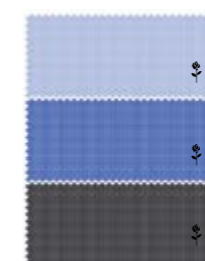
* Size 38 -54

FIL À FIL



SLIM

Kent 1/1
Sizes: 32 - 48



Light blue 080614.12
Mid blue 080614.14
Anthra 080614.33



REGULAR

Kent 1/1
Sizes: 34 - 54



Light blue 080605.12
Mid blue 080605.14
Anthra 080605.33



OFFICE



- Striped blue 693640.11
- Checked blue 693660.12
- Striped navy 693640.19
- Checked navy 693660.19

SLIM

Business Kent 1/1
 Sizes: 36 - 45
 Waist: 98 cm for size 40



- Striped blue 293640.11
- Checked blue 293660.12
- Striped navy 293640.19
- Checked navy 293660.19

SHAPED

Business Kent 1/1
 Sizes: 37 - 46
 Waist: 102 cm for size 40



- Striped blue 193640.11
- Checked blue 193660.12
- Striped navy 193640.19
- Checked navy 193660.19

REGULAR

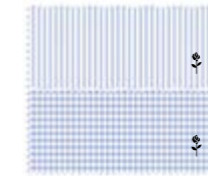
Business Kent 1/1
 with breast pocket
 Sizes: 38 - 48
 Waist: 108 cm for size 40

OFFICE

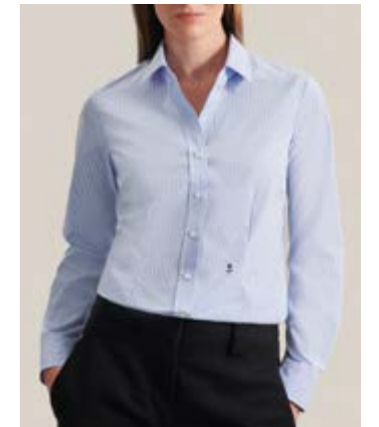


SLIM

Kent 1/1
 Sizes: 32 - 48



- Striped blue 080619.13
- Checked blue 080619.14



POLOSHIRT



100% CO



White	141880.01
Grey	141880.33
Dark blue	141880.19
Black	141880.39

Sizes: S - 3XL

POLOSHIRT



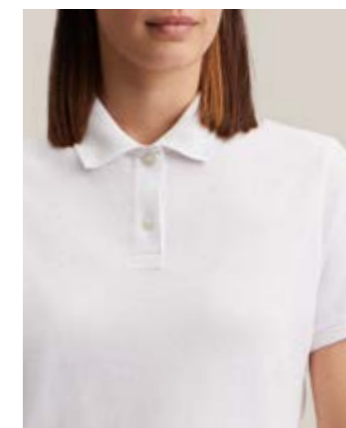
100% CO



Sizes: XS - XL



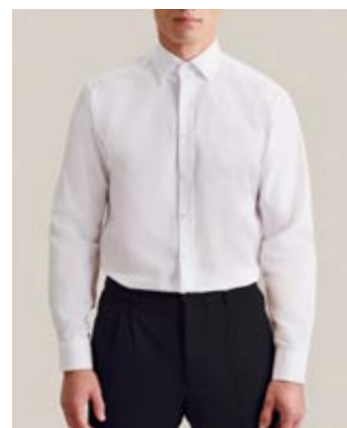
White	135141.01
Grey	135141.33
Dark blue	135141.19
Black	135141.39





Menswear Special

POPLIN BUTTON-DOWN



White

666242.01

SLIM

Button Down 1/1
Sizes: 36 - 45
Waist: 98 cm for size 40



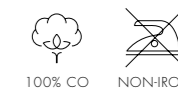
White

293702.01

SHAPED

Button Down 1/1
Sizes: 37 - 46
Waist: 102 cm for size 40

POPLIN BUTTON-DOWN



REGULAR

Button Down 1/1
with breast pocket
Sizes: 38 - 48
Waist: 108 cm for size 40



White

003002.01



Button Down 1/2
with breast pocket



White

003011.01

TWILL



White 653690.01
Light blue 653690.12

SLIM
Business Kent 1/1
Sizes: 36 - 45
Waist: 98 cm for size 40



White 253690.01
Light blue 253690.12

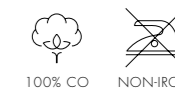
SHAPED
Business Kent 1/1
Sizes: 37 - 46
Waist: 102 cm for size 40



White 153690.01
Light blue 153690.12

REGULAR
Business Kent 1/1
with breast pocket
Sizes: 38 - 48
Waist: 108 cm for size 40

OXFORD



White 693677.01
Light blue 693677.11

SLIM
Spread Kent 1/1
Sizes: 36 - 45
Waist: 98 cm for size 40



White 293677.01
Light blue 293677.11

SHAPED
Spread Kent 1/1
Sizes: 37 - 46
Waist: 102 cm for size 40



White 193677.01
Light blue 193677.11

REGULAR
Spread Kent 1/1
with breast pocket
Sizes: 38 - 48
Waist: 108 cm for size 40



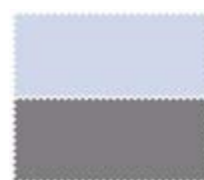
CHAMBRAY



Anthra 477870.32

X-SLIM

Business Kent 1/1
 Sizes: 36 - 44
 Waist: 94 cm for size 40



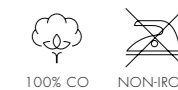
Light blue 666250.11

Anthra 666250.37

SLIM

Business Kent 1/1
 Sizes: 36 - 45
 Waist: 98 cm for size 40

CHAMBRAY



SHAPED

Business Kent 1/1
 Sizes: 37 - 46
 Waist: 102 cm for size 40



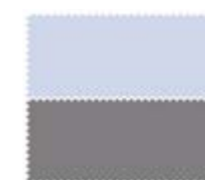
Light blue 022000.15

Anthra 022000.32



REGULAR

Business Kent 1/1
 with breast pocket
 Sizes: 38 - 48
 Waist: 108 cm for size 40



Light blue 002000.15

Anthra 002000.32



STRUCTURE

100% CO NON-IRON



White 693650.01
Light blue 693650.11
Dark blue 693650.19

SLIM
Business Kent 1/1
Sizes: 36 - 45
Waist: 98 cm for size 40



White 293650.01
Light blue 293650.11
Dark blue 293650.19

SHAPED
Business Kent 1/1
Sizes: 37 - 46
Waist: 104 cm for size 40



White 193650.01
Light blue 193650.11
Dark blue 193650.19

REGULAR
Business Kent 1/1
with breast pocket
Sizes: 38 - 48
Waist: 108 cm for size 40



PATCH



White 693690.01
 Light blue 693690.10
 Dark blue 693690.19
 Black 693690.39

SLIM

Business Kent Patch 12 1/1
 Contrast button: Col. 01+10
 Sizes: 36 - 45
 Waist: 98 cm for size 40



White 293690.01
 Light blue 293690.10
 Dark blue 293690.19
 Black 293690.39

SHAPED

Business Kent Patch 12 1/1
 Contrast button: Col. 01+10
 Sizes: 37 - 46
 Waist: 102 cm for size 40



White 193690.01
 Light blue 193690.10
 Dark blue 193690.19
 Black 193690.39

REGULAR

Business Kent Patch 12 1/1
 with breast pocket
 Contrast button: Col. 01+10
 Sizes: 38 - 48
 Waist: 108 cm for size 40

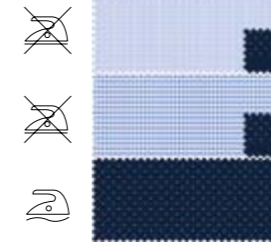
PATCH



Business Kent Business Kent with breast pocket Business Kent Patch 13 Business Kent Patch 13 with breast pocket

SLIM

Business Kent
 (Col. 11+12: Patch 13)
 Sizes: 36 - 45
 Waist: 98 cm for size 40

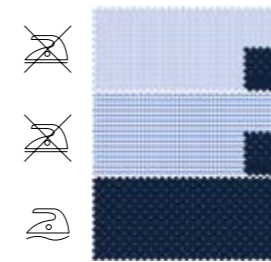


Light blue 653700.11
 Light blue 653710.12
 Dark blue 653750.19

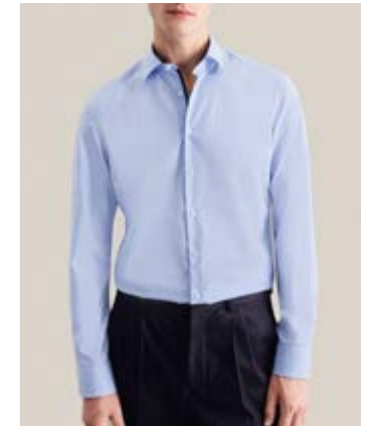


SHAPED

Business Kent
 (Col. 11+12: Patch 13)
 Sizes: 37 - 46
 Waist: 102 cm for size 40

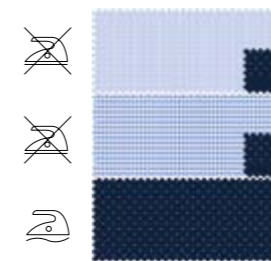


Light blue 253700.11
 Light blue 253710.12
 Dark blue 253750.19

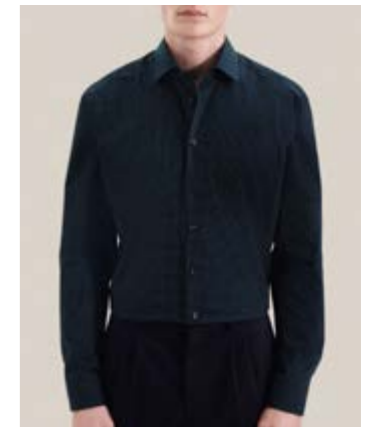


REGULAR

Business Kent
 (Col. 11+12: Patch 13)
 with breast pocket
 Sizes: 38 - 48
 Waist: 108 cm for size 40



Light blue 153700.11
 Light blue 153710.12
 Dark blue 153750.19



PATCH



White 653760.01
Light blue 653760.14

SLIM
Business Kent Patch 3
Sizes: 36 - 45
Waist: 98 cm for size 40



White 253760.01
Light blue 253760.14

SHAPED
Business Kent Patch 3
Sizes: 37 - 46
Waist: 102 cm for size 40



White 153760.01
Light blue 153760.14

REGULAR
Business Kent Patch 3 oT
Sizes: 38 - 48
Waist: 108 cm for size 40

PATCH



White 653480.01
Light blue 653480.14
Dark blue 653480.19

SLIM
Business Kent Patch 13
Sizes: 36 - 45
Waist: 98 cm for size 40



White 253480.01
Light blue 253480.14
Dark blue 253480.19

SHAPED
Business Kent Patch 13
Sizes: 37 - 46
Waist: 102 cm for size 40



White 153480.01
Light blue 153480.11
Dark blue 153480.19

REGULAR
Business Kent Patch 13 oT
Sizes: 38 - 48
Waist: 108 cm for size 40



PATCH



White 653730.01
Light blue 653730.11
Dark blue 653730.19

SLIM

Business Kent
Col. 01+11: Patch 3
Col. 19: Patch 13
Sizes: 36 - 45
Waist: 98 cm for size 40



White 253730.01
Light blue 253730.11
Dark blue 253730.19

SHAPED

Business Kent
Col. 01+11: Patch 3
Col. 19: Patch 13
Sizes: 37 - 46
Waist: 102 cm for size 40

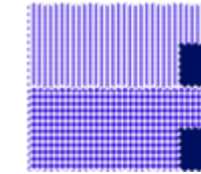


White 153730.01
Light blue 153730.11
Dark blue 153730.19

REGULAR

Business Kent with breast pocket
Col. 01+11: Patch 3
Col. 19: Patch 13
Sizes: 38 - 48
Waist: 108 cm for size 40

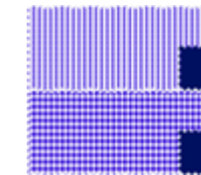
PATCH



Mid blue 653720.15
Mid blue 653740.16

SLIM

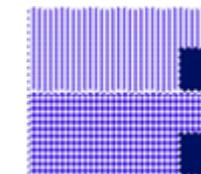
Business Kent Patch 5
Sizes: 36 - 45
Waist: 98 cm for size 40



Mid blue 253720.15
Mid blue 253740.16

SHAPED

Business Kent Patch 5
Sizes: 37 - 46
Waist: 102 cm for size 40



Mid blue 153720.15
Mid blue 153740.16

REGULAR

Business Kent Patch 5
with breast pocket
Sizes: 38 - 48
Waist: 108 cm for size 40



GALA



Business Kent
UMA



Business Kent UMA
with breast pocket



Business Kent
Party UMA



White

666244.01



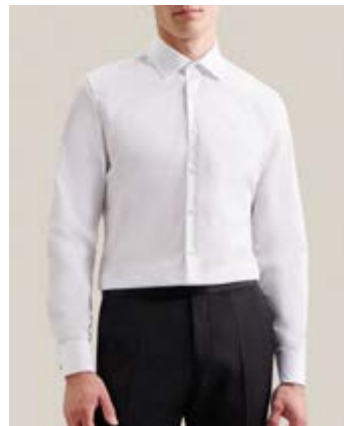
SLIM

Sizes: 36 - 45
Waist: 98 cm for size 40



White

675674.01



White

021006.01



SHAPED

Sizes: 37 - 46
Waist: 102 cm for size 40



White

245270.01



White

001007.01



REGULAR

Sizes: 38 - 48
Waist: 108 cm for size 40



White

001034.01



ORIGINAL



SLIM

Business Kent 1/1
Twill
Sizes: 36 - 45
Waist: 98 cm for size 40



White

676550.01



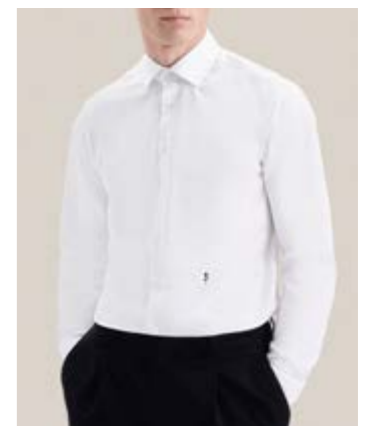
White

246470.01

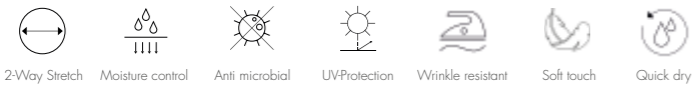


White

112560.01



PERFORMANCE



White	650400.01
Striped blue	650420.11
Light blue	650400.11
Striped navy	650420.19
Navy	650400.19

SLIM

Light Kent 1/1
 Sizes: 36 - 45
 Waist: 98 cm for size 40



White	150400.01
Striped blue	150420.11
Light blue	150400.11
Striped navy	150420.19
Navy	150400.19

REGULAR

Light Kent oT 1/1
 Sizes: 38 - 48
 Waist: 108 cm for size 40





Womenswear Special

POPLIN



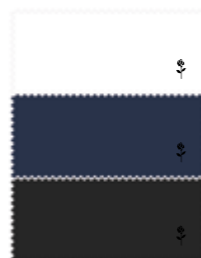
Kelch 1/1



Kent OA



Tunika



White 118201.01
Dark blue 118201.18
Black 118201.39



SLIM
Kelch 1/1
Sizes: 32 - 48



White 127406.01



SLIM
Kent OA
Sizes: 32 - 48

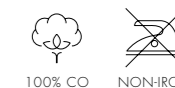


White 132933.01



TUNIKA
Sizes: 34 - 46

TWILL



SLIM
Kelch 1/1
Sizes: 32 - 48



White 080645.01
Light blue 080645.11
Pink 080645.41



SLIM
Kelch 1/1
Sizes: 32 - 48



White 080644.01
Light blue 080644.11
Pink 080644.41





Accessories

TIES



5cm



175083/19



175083/34

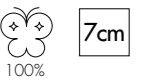


175083/39



175083/49

TIES



7cm



171090/14



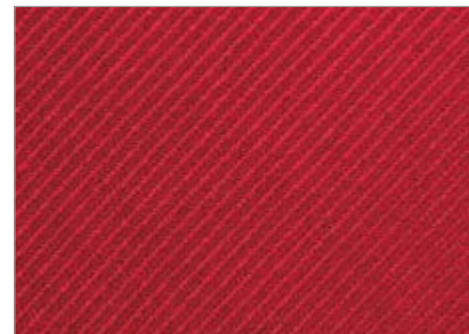
171090/18



171090/38



171090/31



171090/45



171090/48

BOW TIES & POCHETTE



Bow Tie
176127/39



Bow Tie
176137/39



Pochette
176149/01

T-SHIRTS



V-NECK 1/2

Sizes: S - XXL



White 242491.01

Black 242491.39



O-NECK 1/2

Sizes: S - XXL



White 242490.01

Black 242490.39

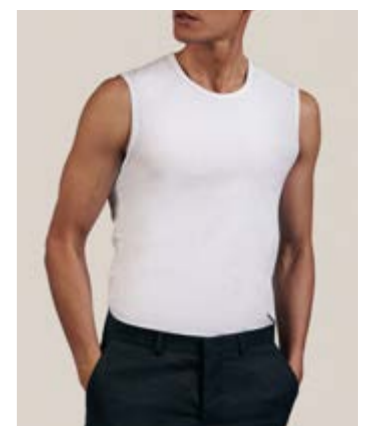


TANKTOP

Sizes: S - XXL



White 242492.01

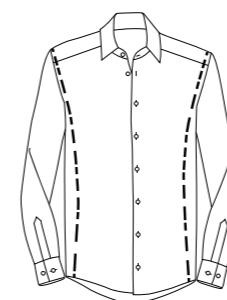


Measurements Menswear

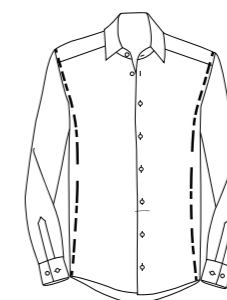
■ SLIM	XS	S	M	L	XL	XXL	3XL	4XL	5XL	6XL
Collar Size Halsweite	36	37/38	39/40	41/42	43/44	45	·	·	·	·
Chest measurements Oberweite	96	104	112	118	126	134	·	·	·	·
Waist Taille	82	90	98	104	112	120	·	·	·	·
Sleeve length Ärmellänge N	66,5	66,5	66,5	66,5	67,5	67,5	·	·	·	·
Sleeve length Ärmellänge ELA	70	70	70	70	70	70	·	·	·	·
Sleeve length Ärmellänge 1/2	23	23	23	23	23	23	·	·	·	·
Body length Rumpflänge N+ 1/2	76	77	78	79	80	81	·	·	·	·
Body length Rumpflänge ELA	81	82	83	84	85	86	·	·	·	·

▼ SHAPED	XS	S	M	L	XL	XXL	3XL	4XL	5XL	6XL
Collar Size Halsweite	·	37/38	39/40	41/42	43/44	45/46	·	·	·	·
Chest measurements Oberweite	·	108	114	122	128	134	·	·	·	·
Waist Taille	·	94	102	108	114	120	·	·	·	·
Sleeve length Ärmellänge N	·	66,5	66,5	66,5	67,5	67,5	·	·	·	·
Sleeve length Ärmellänge ELA	·	71	71	71	71	71	·	·	·	·
Sleeve length Ärmellänge 1/2	·	25	25	25	25	25	·	·	·	·
Body length Rumpflänge N+ 1/2	·	79	80	81	82	83	·	·	·	·
Body length Rumpflänge ELA	·	82	83	84	85	86	·	·	·	·

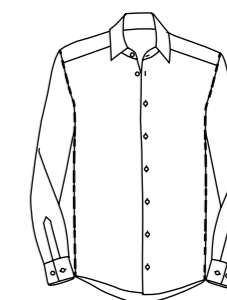
■ REGULAR	XS	S	M	L	XL	XXL	3XL	4XL	5XL	6XL
Collar Size Halsweite	·	38	39/40	41/42	43/44	45/46	47/48	49/50	51/52	53/54
Chest measurements Oberweite	·	110	116	124	132	140	150	156	160	164
Waist Taille	·	100	108	116	126	134	146	156	164	170
Sleeve length Ärmellänge N	·	66	66	66	66	66	66	66	66	66
Sleeve length Ärmellänge ELA	·	70	70	70	70	70	70	70	70	70
Sleeve length Ärmellänge 1/2	·	26	26	26	26	26	28	28	28	28
Body length Rumpflänge N+ 1/2	·	82	82	82	85	85	90	90	90	90
Body length Rumpflänge ELA	·	87	87	87	90	90	95	95	95	95



SLIM



SHAPED



REGULAR

Measurements Womenswear

Slim 080613 / -19	32	34	36	38	40	42	44	46	48	50	52	54
Chest measurements Oberweite	89	93	97	101	105	112	118	124	130	.	.	.
Waist Taille	72	76	80	84	88	98	104	110	116	.	.	.
Body length Rumpflänge	66	66	66	66	68	68	69	69	70	.	.	.
Sleeve length Ärmellänge	62	62	62	63	63	63	63	64	64	.	.	.

Slim 080614	32	34	36	38	40	42	44	46	48	50	52	54
Chest measurements Oberweite	90	94	98	102	106	113	119	125	131	.	.	.
Waist Taille	74	78	82	86	90	100	106	112	118	.	.	.
Body length Rumpflänge	64	64	64	64	66	66	67	67	68	.	.	.
Sleeve length Ärmellänge	28	28	29	29	29	30	30	31	31	.	.	.

Slim 080635	32	34	36	38	40	42	44	46	48	50	52	54
Chest measurements Oberweite	89	93	97	101	105	112	118	124	130	.	.	.
Waist Taille	72	76	80	84	88	98	104	110	116	.	.	.
Body length Rumpflänge	66	66	66	66	68	68	69	69	70	.	.	.
Sleeve length Ärmellänge	62	62	62	63	63	63	63	64	64	.	.	.



080613
080619



080614



080635

Measurements Womenswear

Slim 080636	32	34	36	38	40	42	44	46	48	50	52	54
Chest measurements Oberweite	90	94	98	102	106	113	119	125	131	·	·	·
Waist Taille	74	78	82	86	90	100	106	112	118	·	·	·
Body length Rumpflänge	64	64	64	64	66	66	67	67	68	·	·	·
Sleeve length Ärmellänge	26	26	27	27	27	28	28	29	29	·	·	·

Slim 118201	32	34	36	38	40	42	44	46	48	50	52	54
Chest measurements Oberweite	89	93	97	101	105	112	118	124	130	·	·	·
Waist Taille	70	74	78	82	86	98	104	110	116	·	·	·
Body length Rumpflänge	72	72	73	73	74	74	76	76	76	·	·	·
Sleeve length Ärmellänge	62	62	62	63	63	63	63	64	64	·	·	·

Regular 080604	32	34	36	38	40	42	44	46	48	50	52	54
Chest measurements Oberweite	·	94	98	102	106	110	116	121	127	132	138	143
Waist Taille	·	81	85	89	94	98	104	110	116	122	129	134
Body length Rumpflänge	·	64	64	64	66	67	68	70	71	72	73	75
Sleeve length Ärmellänge	·	62	62	62	63	63	63	63	64	64	64	64

Regular 080605	32	34	36	38	40	42	44	46	48	50	52	54
Chest measurements Oberweite	·	94	98	102	106	110	116	121	127	132	138	143
Waist Taille	·	81	85	89	94	98	104	110	116	122	129	134
Body length Rumpflänge	·	63	64	64	66	67	68	70	71	72	73	75
Sleeve length Ärmellänge	·	26	27	27	27	28	28	29	29	29	30	30



080636



118201



080604



080605

